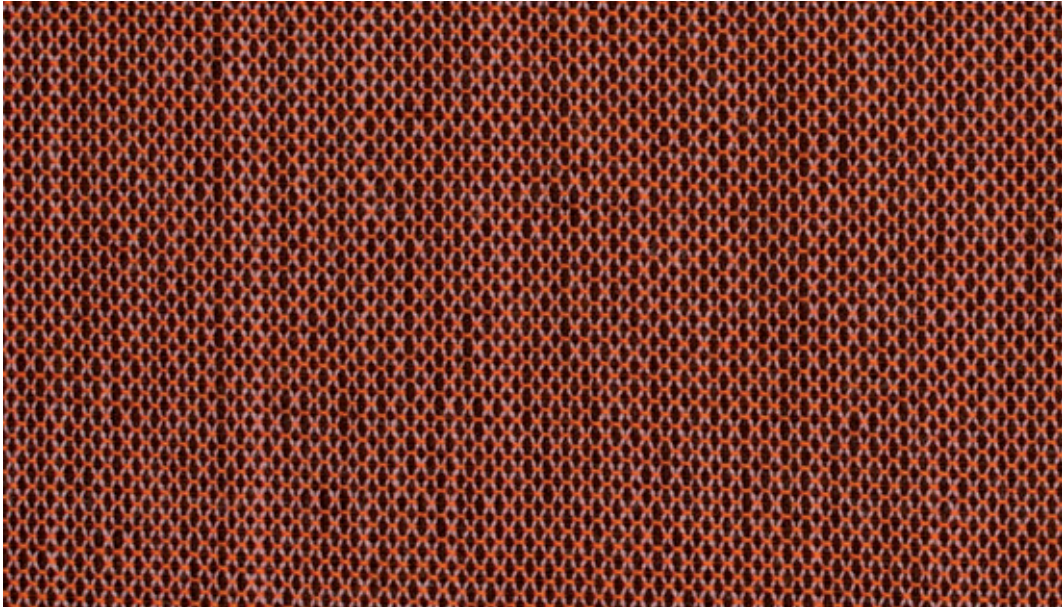
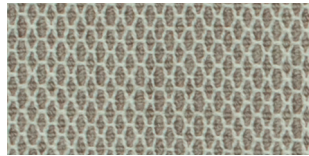


CRISSCROSS™

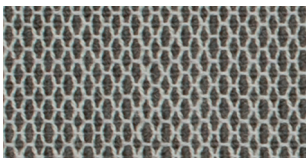
by Gabriel



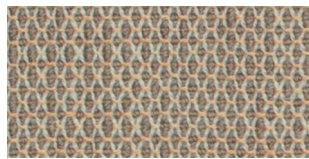
2201



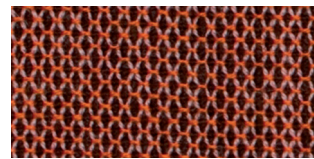
1501



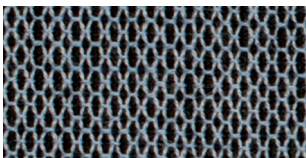
1101



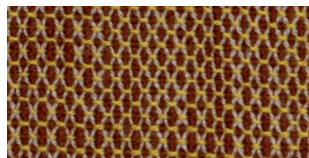
1502



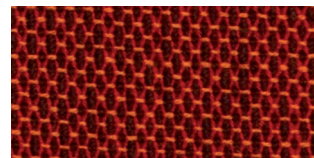
2201



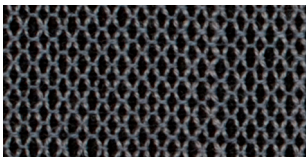
1201



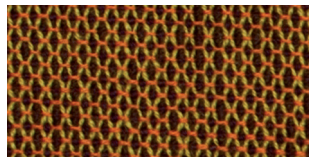
1801



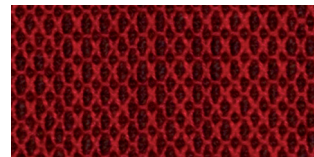
2001



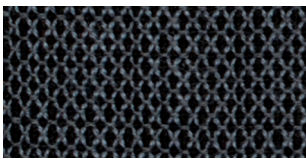
1301



1901



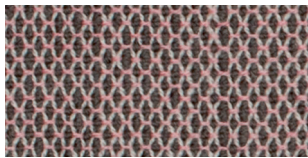
2002



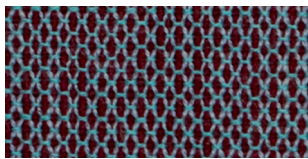
1401



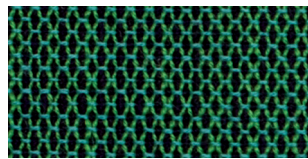
2101



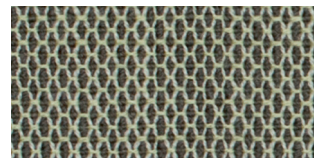
1103



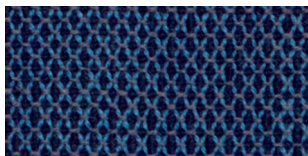
2301



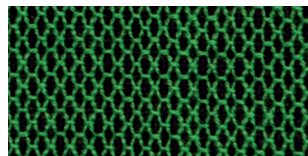
2601



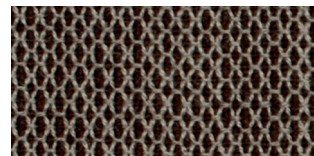
1102



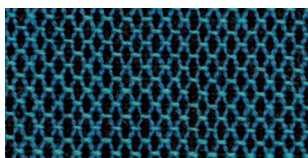
2401



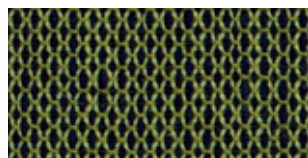
2602



1601



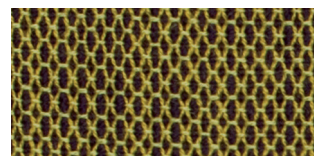
2501



2701



1701



1902

CRISSCROSS™

Design no.	12-2459	
Fields of application	contract furnishing · soft seating	
Material	wools of New Zealand · polyamide	89% · 11%
Weight	585 g/lm · (18.87 oz/lin.yd.)	
Width	140 cm · (55")	
Abrasion resistance	rubs · BS EN 14465 · EN ISO 12947-2 (Martindale)	110,000
Pilling	scale 1-5, max. 5 · EN ISO 12945-2	4-5
Colour fastness to light	scale 1-8, max. 8 · EN ISO 105 - B02	5-7
Colour fastness to rubbing	scale 1-5, max. 5 · EN ISO 105x12 (wet/dry)	4-5
Maintenance	dry cleaning	P (S)
Flammability	EN 1021 1&2 · BS 5852 0&1 · CAL 117-E Class 1 · CA TB 117-2013 Will also pass other flammability standards. Flame retardant performance is dependent upon the foam used.	
US ACT	<ul style="list-style-type: none"> ☀ AATCC 16 Lightfastness ☯ AATCC 8 or 116 wet/dry crocking 🔥 California Bulletin CAL 117-E Class 1 🔥 CA TB 117-2013 ⚠ ASTM D4966-02 Martindale Abrasion (Heavy Duty Upholstery) ★ ASTM D3511 Pilling 	<ul style="list-style-type: none"> pass pass pass pass pass pass
Design/Colour	Mette Krebs Petersen	
Subject to changes and colour differences		



QUALITY SYSTEM AND ENVIRONMENTAL MANAGEMENT SYSTEM
DS/EN ISO 9001
DS/EN ISO 14001

